

## Summary of Supplemental Material

**Table S1.** New SNP genotyping primers.

**Figure S1. Gene genealogies of individual MLST markers.** Shown are only those loci with 3 or more alleles and no indels (i.e., SNPs only). Sequences found in the *Bd*-GPL and *Bd*-Brazil are indicated as “1” and “2”. Sequences restricted to the *Bd*-Brazil genotypes are indicated as “3” and “4”. Branch lengths were estimated using parsimony.

**Figure S2. Accumulation of phylogenetic diversity across groups of ITS rRNA sequences.** Phylogenetic diversity was measured as the sum of branch lengths connecting the sequences of the group of interest, and rarefaction was used to assess samples of different sizes. The sequence region included and groups were the same as that used to construct **Figure 7**.

**Table S1.** New SNP genotyping primers and their location in the *Bd* genome (based on JEL423 assembly by the Broad Institute).

**Table S1.** New SNP genotyping primers and their location in the *Bd* genome (based on JEL423 assembly by the Broad Institute).

Locus	Location	Primers
BdSC1.2	Supercontig 1: 2000821- 2001574	BdSC1.2-F 5'-CGTTTCGATGGTTGTTTCCTT BdSC1.2-R 5'-TCTGATCAAGCGCAGTATGG
BdSC1.2.4	Supercontig 1: 2429321- 2430059	BdSC1.2.4-F 5'-TAGGCCAAAAACCACACCAT BdSC1.2.4-R 5'-GCTTGGAAAATATGGGCAA
BdSC2.02	Supercontig 2: 208384- 208851	BdSC2.02-F 5'-CCATTATGCACGACTGTTGC BdSC2.02-R 5'-AGTCATCCCACAACCAAACC
BdSC3.1	Supercontig 3: 170062- 170506	BdSC3.1-F 5'-CAGTGACTTGCATCCACGAG BdSC3.1-R 5'-AATCGCTTCAACCAAACCTGG
BdSC3.9	Supercontig 3: 973365- 973819	BdSC3.9-F 5'-TTGCTCAGGATGCACAAAAC BdSC3.9-R 5'-CCCTCAACAAACGCTTCAAT
BdSC4.3	Supercontig 4: 320639- 321172	BdSC4.3-F 5'-GGTTTTATGCGAAGCTCCAG BdSC4.3-R 5'-GTGGCTCTACCCCGGTACTT
BdSC4.16	Supercontig 4: 1642004- 1642587	BdSC4.16-F 5'-TCAACTGGCTTTGAGCACAC BdSC4.16-R 5'-ATAGAGCATGCAGATCGCTTT
BdSC5.1	Supercontig 5: 119010-	BdSC5.1-F 5'-TCCTGAATAAGACCGCGAAG

	119592	BdSC5.1-R 5'-CTCCCGATCCCTACATTGAA
BdSC5.6	Supercontig 5: 604501- 605204	BdSC5.6-F 5'-TCGGCAAAGCATATCTCTGAT BdSC5.6-R 5'-CTTATGAAAAGAGCGCAGCA
BdSC6.2	Supercontig 6: 229850- 230517	BdSC6.2-F 5'-GGTGATGAGGTTGGGAAGTG BdSC6.2-R 5'-AACCTGCTGCACTTTTAGGC
BdSC6.6	Supercontig 6: 641344- 642082	BdSC6.6-F 5'-CATCTGCAATTCTTCCAGCA BdSC6.6-R 5'-CCAACCTGATCCGAAAGTGT
BdSC6.15	Supercontig 6: 1505001- 1505511	BdSC6.15-F 5'-GACGATAAAACGACAACAATCG BdSC6.15-R 5'-CCCTTTTTAGGTTGGCTTGC
BdSC7.6	Supercontig 7: 657773- 658284	BdSC7.6-F 5'-TGTGCCCGTGTTTTTGATTA BdSC7.6-R 5'-GTTACAACCTCCCGCTCGTA
BdSC8.10	Supercontig 8: 980089- 980589	BdSC8.10-F 5'-TGACAAAGTGCCGAGTGTTT BdSC8.10-R 5'-TTGGCTATACCCGACTACGC
BdSC9.7	Supercontig 9: 676040- 676543	BdSC9.7-F 5'-GGGCCTGCAAATAGACCTTT BdSC9.7-R 5'-GCGTGCAGTTCTTCAGTGAG
BdSC12.4	Supercontig 12: 368538- 369057	BdSC12.4-F 5'-CGCATTCAGACACCACAGAT BdSC12.4-R 5'-TCGGCAAATTTGTCTGATGA
Bd-HMG17	Supercontig 17: 128891- 129680	Bd-HMG17-F 5'-GATCTCCAAGCACGTCCAAT Bd-HMG17-R 5'-CGGACCACCATAGCAGATTT

Figure S1

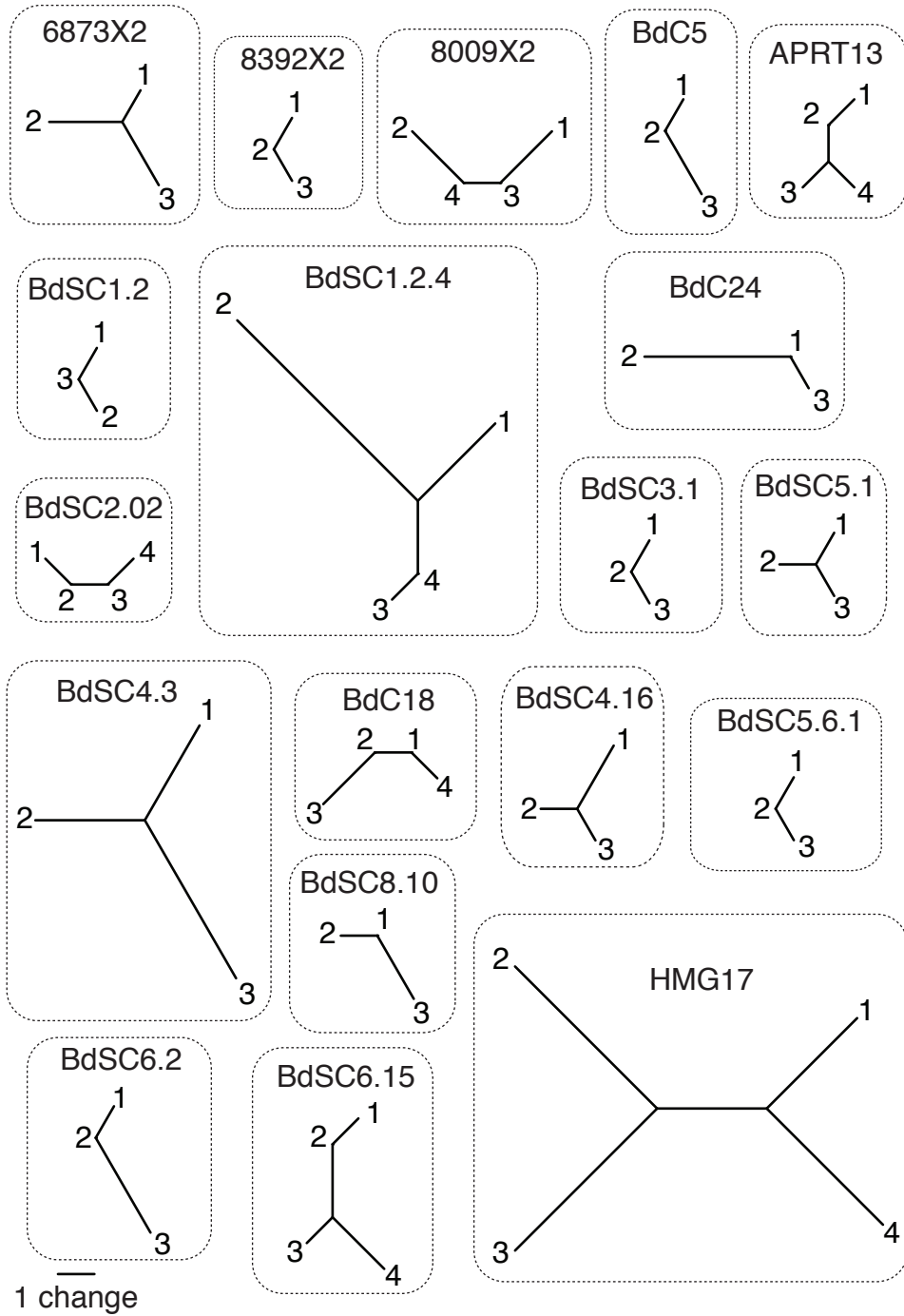


Figure S2

